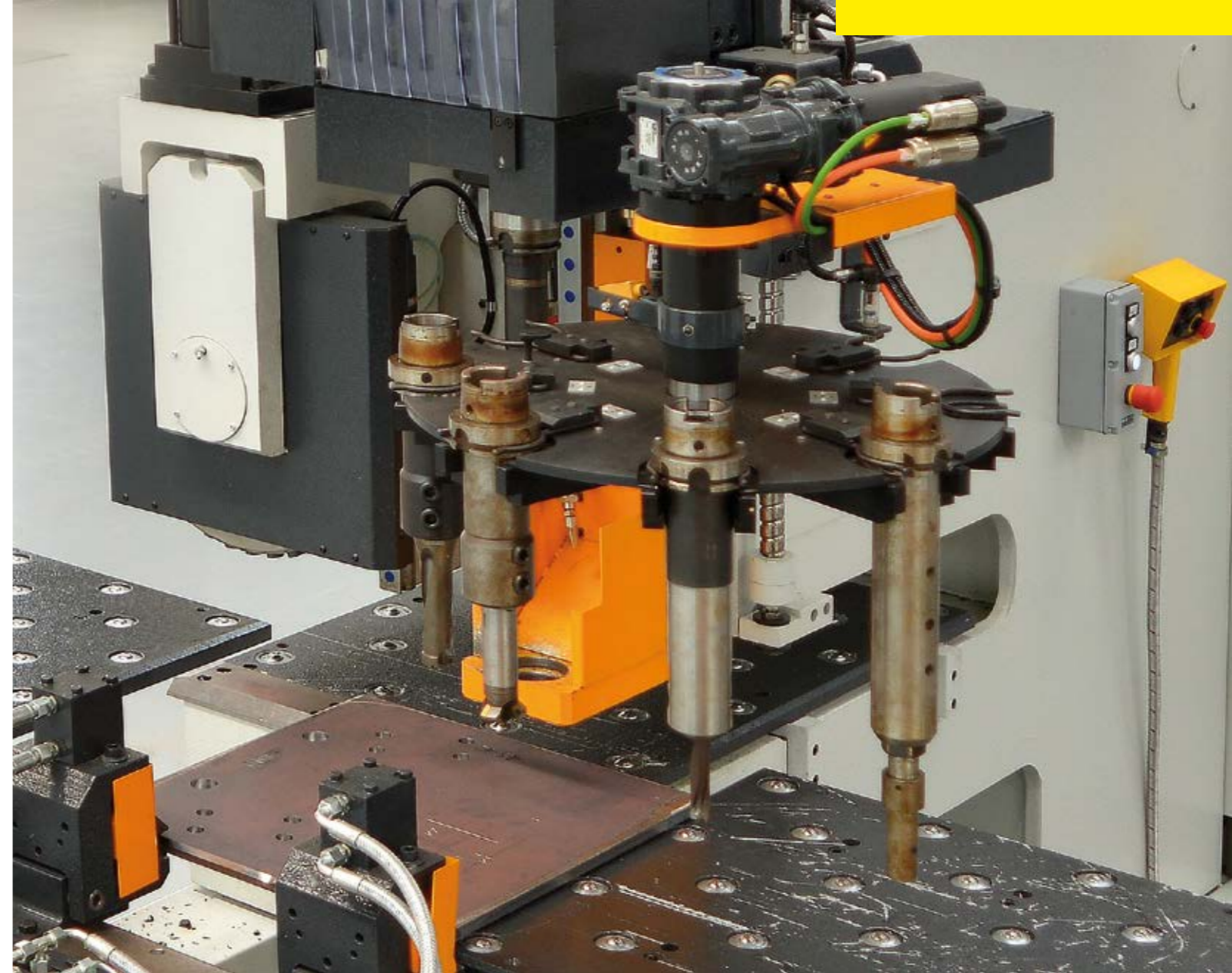


Optional 8-position automatic tool changer with robust HSK-A80 tool holders. The available tools range from different size drills, taps and scribing tools.



03-2016 Advanced Agency VA

TECHNICAL CHARACTERISTICS

MODEL	P 27E	
Plate size	min. Inch	4" x 4"
	max. Inch	39" x *
* The coordinate table allows repositioning of the clamps so the maximum length depends on the maximum weight of the plate.		
Max weight at normal positioning speed	Lbs.	835
A plate weighing up to 1,320 lbs. may be positioned at a slower positioning speed		
Plate thickness	min. Inch	1/4"
	max. Inch	3
Angles (to be processed with optional equipment)	min. Inch	3-1/2" x 3-1/2" x 3/8"
	max. Inch	6" x 6" x 1/2"
Lengths of angles to be processed	min. Inch	4"
	max. Inch	39"
X axis positioning stroke	Inch	49"
Y axis positioning stroke	Inch	39"
Maximum axes positioning speed	IPM	1,500
Maximum axes positioning speed at 45°	IPM	2,080
Drilling capacity		
Vertical drilling head	No.	1
Vertical head spindle	No.	1
Maximum drilling diameter	Inch	1-9/16"
Maximum drilling thickness	Inch	3"
Power per spindle S1 (56-60%)	HP	25
Spindle speed constantly adjustable by the programme	RPM	180 - 3500

Please review FICEP's terms and conditions of sale and system specifications that are in our formal proposal. The manufacturer reserves the right to change specifications and features from those indicated in this brochure. Current specifications and features are part of the formal quotation



FICEP S.p.A. - HEADQUARTERS
 via Matteotti, 21 • 21045 GAZZADA SCHIANO VA - ITALY
 Tel +39 0332 876111 • Fax +39 0332 462459
 E-mail: ficep@ficep.it • www.ficepgroup.com



FICEP CORPORATION
 2301 Industry Court - Forest Hill Industrial Park
 Forest Hill, MD 21050
 Tel +1 410 588-5800 • Fax +1 410 588-5900
 E-mail: info@ficepcorp.com • www.ficepcorp.com



P27E

CNC plate drilling line



MADE IN ITALY



P27E CNC plate drilling line

The P 27E is a drilling system specifically designed for automatic processing of plates up to 3" in thickness.

Traditional drilling methods have been replaced by the Ficep P 27E CNC plate drill because of its ability to not only drill but mark part numbers with a hard stamp unit, scribe references and locations and also tap.

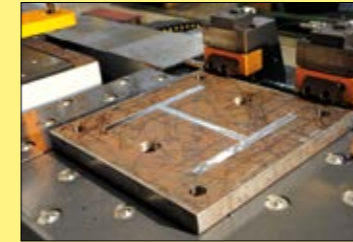
The drilling machine is made up of:

- A sturdy welded plate frame.
- High speed DIRECT DRIVE drill spindle with ball screw feed.
- 25 HP DIRECT DRIVE spindle delivers full power to the tool as power is not lost by going through a gearbox, for example.
- Automatic tool changer with 8 positions.
- Coordinate table for automatic movement of plates up to 39" x 49". Larger plates can be processed when the automatic repositioning cycle is utilized.
- Ficep Pegaso series CNC.

The P 27E can easily be programmed at the control or in the office.



Automatic scribing tool



Milling features



Pegaso is the new generation CNC for Ficep machines. PC, CNC and PLC are all integrated on a single board, to have the maximum reliability and simplicity. Pegaso is based on field bus technology: CAN bus and EtherCAT, with up to 32 axes controlled.



Independent marking unit with hard stamping device

Vertical hold down and clamps

