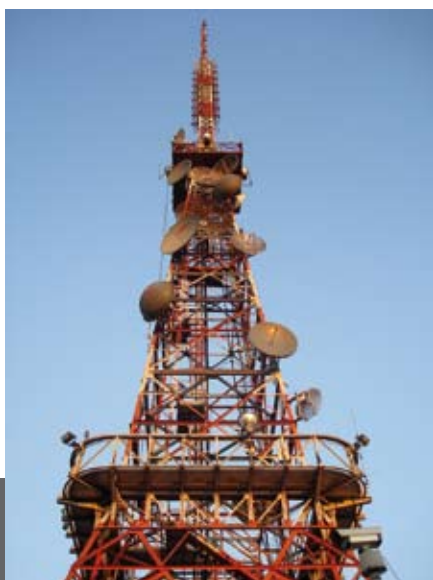




A124T - FAST

CNC punching, marking and shearing line for angles

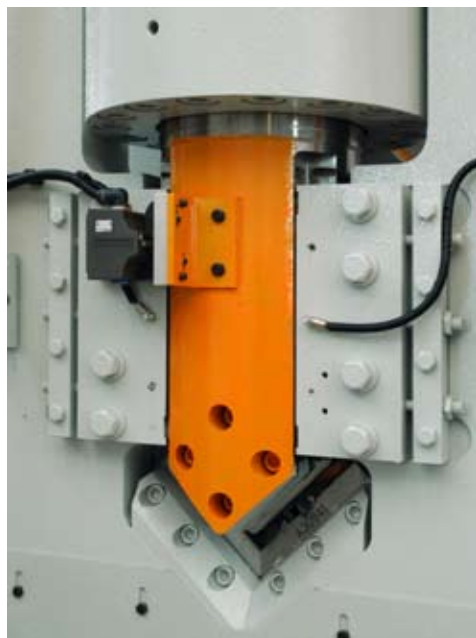
Fast, efficient, reliable: this is the new Ficep angle line specially designed for small and mid size steel construction industries





A124T - FAST

CNC punching, marking and shearing line for angles



- 2 independent punches for each flange automatically selectable from the program
- hydraulic shearing unit to cut pieces at length
- optional marking unit, disc type or with interchangeable cassettes



Main Technical Specifications

Size of the material to be processed:

Angles 510 N/mm ²	min. mm	30x30x3
	max. mm	120x120x13

Diameters available for each flange of the angle	no.	2
--	-----	---

Maximum diameter with standard tool	mm	32
-------------------------------------	----	----

Diameter through thick. 510 N/mm ²	mm	32 x 13
---	----	---------

Maximum bar longitudinal transfer speed	m/min.	90
---	--------	----

Maximum gauge line axes positioning speed	m/min.	7
---	--------	---

CNC axes	no.	5
----------	-----	---